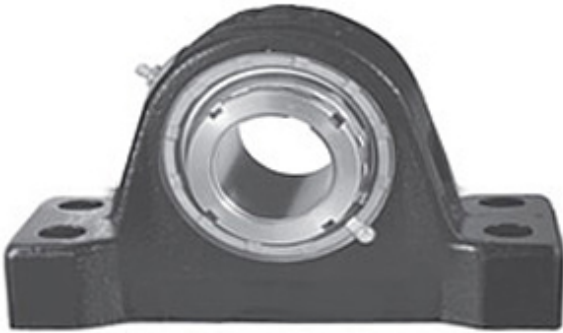


5.938 Inch | 150.825 Millimeter x 11.188 Inch |
 284.175 Millimeter x 7.875 Inch | 200.025
 Millimeter REXNORD AMP9515F Pillow Block
 Bearings



Bearing No. AMP9515F

AMP9515F Bearing 2D drawings and 3D CAD models

Category	Pillow Block Bearings
Inventory	0.0
Manufacturer Name	REXNORD
Minimum Buy Quantity	N/A
Weight	174.336
EAN	0698210860332
Product Group	M06288
Number of Mounting Holes	4
Mounting Method	Tapered Adapter Sleeve
Housing Style	4 Bolt Pillow Block
Rolling Element	Spherical Roller Bearing
Housing Material	Cast Iron
Expansion / Non-expansion	Non-expansion
Mounting Bolts	1-1/4 Inch
Relubricatable	Yes
Insert Part Number	9515U
Seals	Heavy Contact
Housing Configuration	1 Piece Solid
Inch - Metric	Inch
Other Features	Double Row Two Open Auxiliary End Cap
Long Description	4 Bolt Pillow Block; 5-15/16" Bore; 7-7/8" Base to Center Height; Tapered Adapter Sleeve Mount;



Jinan Chenyu Bearing Import & Export ...

	Spherical Roller Bearing; Relubricatable; Cast Iron; Heavy Contact; Non- expansion
Category	Pillow Block
UNSPSC	31171511
Harmonized Tariff Code	8483.20.40.80
Noun	Bearing
Keyword String	Pillow Block
Manufacturer URL	http://www.rexnord.com
Manufacturer Item Number	AMP9515F
Manufacturer Internal Number	6886033
Weight / LBS	328
d	5.938 Inch 150.825 Millimeter
Bolt Spacing Minimum	0 Inch 0Millimeter
Actual Bolt Center to Center	23 Inch 584.2Millimeter
D	11.188 Inch 284.175 Millimeter
Nominal Bolt Center to Center	23 Inch 584.2 Millimeter
B	7.875 Inch 200.025 Millimeter
Bolt Spacing Maximum	0 Inch 0Millimeter